



EXCELLENCE. REDEFINED.

PM-50: THE PANEL METER REIMAGINED

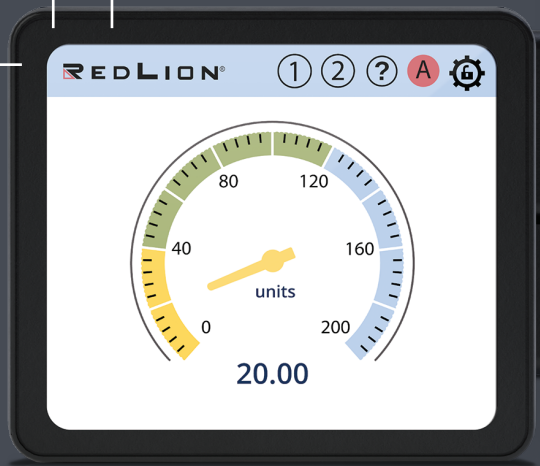
ON-BOARD FEATURES

- Smart device connectivity
- Wi-Fi and Modbus communications
- Universal inputs
- Dual solid state outputs
- Display color change and status notification
- Start-up wizard/ programming assistance
- App for programming and monitoring
- Modular construction for additional capability

3.5" Full color graphical touchscreen

Single screen display, swipe for an additional 4 screens

Easily replaces 1/16 DIN products



4.3" Full color graphical touchscreen

Dual screen display, swipe for an additional 2 screens

Easily replaces 1/8 DIN products



ADDITIONAL CAPABILITIES

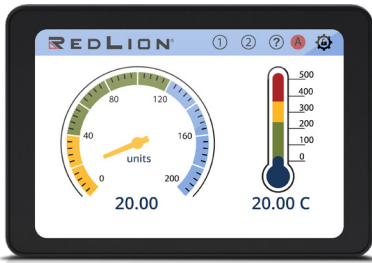
- Ethernet and RS232 communications
- Retransmitted analog output
- Dual form "C" relays
- Quad form "A" relays
- AC power module



CONNECT TO DATA. AND TO SAVINGS.

Red Lion's Graphical Panel Meter PM-50 empowers your customers to monitor their equipment and see their data like never before. This next-generation graphical panel meter not only enhances the appearance of any machine, it connects customers to the information that matters most, where and when they need it most. Simply change out an old meter to leverage time and money-saving data collection—meaning that creating a smart plant floor has never been easier.

Smart-device connectivity frees critical data from the confines of the plant floor, enabling the remote gathering of workflow and process insights needed to increase production throughout. Instant notifications reduce downtime by keeping your customers on top of equipment needs. On the panel, a touchscreen interface loaded with vibrant, user-friendly graphics allows for more data with less effort. And a built-in set-up wizard and available mobile programming app means anyone can program the meter. With PM-50, the simplicity of a panel meter meets the power of a connected future.



HIGHLY READABLE

Large, best-in-class displays—either 3.5” or 4.3”—with vibrant, user-selectable graphics will enhance the look and feel of your machine.



INCREDIBLY USABLE

Easy smart device-like programming allows users select screens and customize elements without programming software.



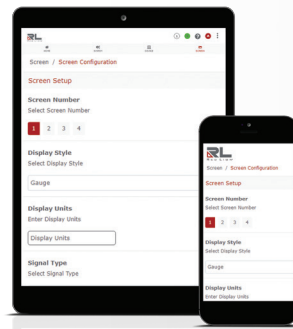
BOUNDLESSLY CONNECTABLE

In addition to Ethernet, Modbus/RS485, and RS232 communication, you can take advantage of Wi-Fi for a truly wire-free connectivity.



EASILY EXPANDABLE

Meet your customer requirements with ease. Use our on-board capabilities or add expansion modules to the PM-50 to add relays, analog output, or communication capabilities



TIMELY INTUITIVE

The SD card can be used to load programs saving time and money. You can program it using mobile apps or from a web browser.



SMARTLY UPGRADEABLE

Simply replace any meter in an 1/8 or 1/16 DIN panel cutout and turn on the Wi-Fi. Welcome to your connected smart factory machine.

THE FUTURE OF PANEL METERS IS HERE

PM-50 is not just a better panel meter. It's the first device to make the power of Industry 4.0 truly accessible by anyone. Contact Red Lion today to learn more and experience the potential of your own smart factory floor.

redlion.net

